

Which bin?

YELLOW RECYCLING BIN

After kerbside collection, the recycled materials in our yellow recycling bin are transported to the Materials Recovery Facility (MRF) at Glen Innes. Here the co-mingled recyclables are sorted by hand and automatic sorting machines into different material types. Once sorted, the recyclables are then baled separately and transported to Sydney, Brisbane or overseas where they are sold to processing plants that manufacture the material into new products such as drink containers and newspapers.

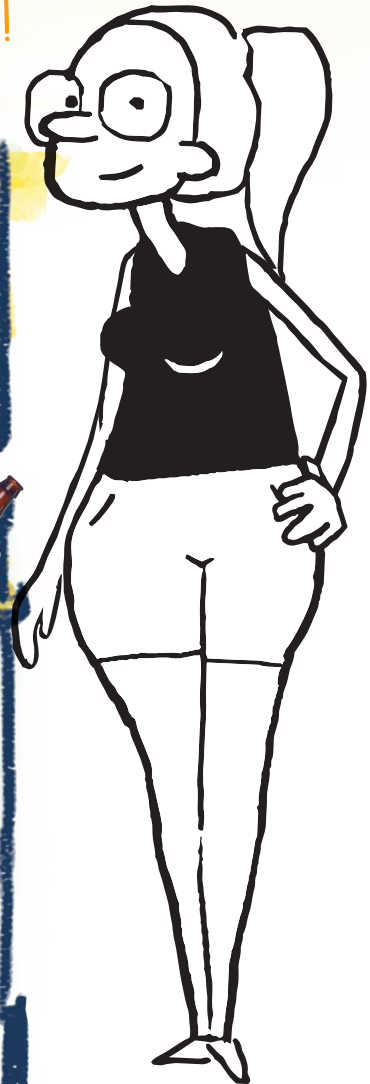
YELLOW BIN

- ✓ All recycling
- ✓ Steel, tin, aluminium cans, including empty aerosols
- ✓ Clear, brown and green glass bottles and jars (rinsed, no lids)
- ✓ Plastic bottles and containers - numbers 1, 2, 3, 4, 5, 6 and 7 (rinsed, no lids)
- ✓ Cardboard boxes, milk and juice cartons
- ✓ Newspapers, magazines, office paper and junk mail, including window envelopes
- ✗ **NO** plastic bags, light bulbs, mirrors or drinking glasses, food or general waste, ceramics, crockery or ovenware, foam or polystyrene, waxed boxes.

YELLOW BIN TIPS

- > **DO NOT** put plastic bags in your yellow bin. Recyclable and compostable materials in plastic bags cannot be processed.
- > Before you recycle, rinse containers with water. This will reduce odours.
- > Flatten large cardboard boxes, but do not jam boxes in the recycling bin – they will get stuck and will not empty.
- > Keep glass bottles whole. Do not break glass. Yellow bin recycling is hand-sorted. Glass mirrors, windows, light globes and drinking glasses cannot be processed as they weaken the final product.

Rinse bottles and jars
and no lids please!



Choose **green** and **yellow** first, so your **red** bin won't burst!



Which bin? Yellow recycling bin

✓ **ACCEPTED**

Collected fortnightly



Plastic containers (# 1-7)



Paper



Cans



Cardboard



Plastic bottles (# 1-7)



Glass bottles

✗ **NOT ACCEPTED**

Visit Council's website to find out how to manage these wastes.



No ceramics



No wrappers & foam



No plastic bags



No organics



No medical & hazardous wastes



No nappies & tissues

For more information visit <https://www.gisc.nsw.gov.au/>

