


POLLUTION INCIDENT RESPONSE MANAGEMENT PLAN

**GLEN INNES AGGREGATES
99 SHANNONVALE ROAD,
GLEN INNES NSW 2370**

Printed copies of this document are uncontrolled.



Decorative curved lines in gold and dark green at the bottom of the page.

ABOUT THIS RELEASE

Title: Pollution Incident Response Management Plan – Glen Innes Aggregates
Author & Reviewer: Mark Gallagher - Quarry Manager (QM)
Authoriser: Keith Appleby - Director Infrastructure Services (DIS)

Issue	Date	Revision Description	Authorised by
Version 13	06/01/2025	Annual Review	Keith Appleby

MANAGEMENT REVIEW

This Plan will be reviewed in accordance with *Section 98C of Regulation Protection of the Environment Operations (General) Amendment (Pollution Incident Response Management Plans) Regulation 2012.*

Review Date	Scope	Reviewed By	Review Record Ref no. Date
10/08/2012 (V1)	New plan for compliance with POEO Act 1997	Mark Gallagher (QM)	10/08/2012
28/01/2014 (V2)	Update contact details, location of Potential Hazardous Materials diagram & Erosion and Sediment Control Plan diagram.	Mark Gallagher (QM)	28/01/2014
01/09/2014 (V3)		Mark Gallagher (QM)	04/09/2014
02/02/2015 (V4)		Mark Gallagher (QM)	02/02/2015
02/02/2016 (V5)		Mark Gallagher (QM)	02/02/2016
24/08/2016 (V6)		Mark Gallagher (QM)	24/08/2016
17/02/2017 (V7)		Mark Gallagher (QM)	17/02/2017
06/02/2018 (V8)		Mark Gallagher (QM)	06/02/2018
04/02/2020 (V9)		Mark Gallagher (QM)	04/02/2020
09/02/2021 (V10)		Mark Gallagher (QM)	09/02/2021
09/02/2022 (V11)	New site map New address Phone number update	Mark Gallagher (QM)	09/02/2022
09/02/2023 (V12)	Address change - Removed Base Bind Tank	Mark Gallagher (QM)	09.02.2023
21.12.2023 (V13)	Added - Equipment inventory & Annual testing register	Mark Gallagher (QM)	21.12.2023
06.01.2025 (V14)	Date changes	Mark Gallagher (QM)	06.01.2025

ENDORSEMENT OF PIRMP



06 / 01 / 2025

Director Infrastructure Services

Date

Reference Number PIRMP GI Aggregates	Version Number 14 Date: 6 Jan 2025	Next Review Date: 6 Jan 2026	Responsible Officer: Mark Gallagher Quarry Manager,
---	---------------------------------------	---------------------------------	--

POLLUTION INCIDENT RESPONSE PLAN

1. Purpose & Scope

This Pollution Incident Response Plan has been developed to describe Glen Innes Severn Council's response to a potential pollution incident and to meet the requirements of the Protection of the *Environment Operations Act (POEO Act 1997)*.

The PIRP covers the facility with an Environment Protection Licence controlled by Glen Innes Severn Council and situated at Glen Innes Aggregates, Shannonvale Road Glen Innes.

The plan covers description of potential hazards, actions to be taken to prevent additional environmental harm and details of communication required in the event of an incident. The plan is based on a risk assessment for the site.

2. Process

In the event of a pollution incident:

- **Step 1:** Emergency Response Ensure personnel are safe.
- **Step 2:** Emergency Response Contain the incident where possible.
- **Step 3** Notify the Site Manager or Production Coordinator.
- **Step 4** The Site Manager or Production Coordinator to complete the notification required in Section 2.6.2 if the pollution incident meets the definition in section 2.1.

2.1 Definition of Pollution Incident

A pollution incident means an incident or a set of circumstances during or as a consequence of which there is or is likely to be a leak, spill or other escape or deposit of a substance as a result of which pollution has occurred, is occurring or is likely to occur.

It includes an incident or set of circumstances in which a substance has been placed or disposed of on premises but does not include an incident or set of circumstances involving only the emission of any noise.

A pollution incident is required to be notified if there is a risk of "material harm to the environment" which is defined in Section 147 of the *POEO Act* as:

- (a) Harm to the environment is material if
 - (i) It involves actual or potential harm to the health or safety of human beings or to ecosystems that is not trivial; or
 - (ii) It results in actual or potential loss or property damage of an amount of amounts in aggregate, exceeding \$10,000 (or such other amount as is prescribed by the regulations); and
- (b) Loss includes reasonable costs and expenses that would be incurred in taking all reasonable and practicable measures to prevent, mitigate or make good harm to the environment.

2.2 Description and Likelihood of Hazards

Potential pollution incidents identified include:-

Air Pollution Incident	Escape of significant sediment, leachate or fuel off site to a watercourse
Water Pollution Incident	Escape of significant sediment, leachate or fuel off site to a watercourse.
Noise Pollution Incident	Noise only pollution is not included as a notifiable incident.
Land Pollution Incident	Escape of significant sediment, leachate or fuel off site to land.

The licenced site covered by this plan has been assessed in an individual risk assessment. The controlled nature and permitted operation under the licence at the site, storage of waste product, gravel, mulch etc. currently present a low risk. The residual risk from the risk assessment is considered to be low.

2.3 Pre-emptive Actions to be Taken

The most likely forms of pollution incidents are dust or sediment runoff at this site.

Dust mitigation controls include regular watering of roadway with water cart. Watering systems are used on crushing plant to reduce the dust generated from the crushing operation with spoiling the efficiency of the product being produced.

All stormwater runoff is directed through sediment control ponds.

All fueling of plant and equipment is carried out on site in accordance with generally accepted procedures.

2.4 Inventory of Pollutants – Pollutant Risk Register – Glen Innes Aggregates

ID	Hazard/Action	Risk Description: (what could happen, impact cause)	Consequence rating	Likelihood rating	Level of risk/priority	Risk treatments, controls, pre-emptive mitigation measures or response	Controls OR Response References (SWP, SWMS, PLAN)	Effectiveness/Residual Risk/Actions	Responsibility (risk, control, or task owner, etc.)
1 (a)	Diesel Storage: SPILL	Surface water contamination of Sediment Pond (Onsite)	Moderate	Likely	High	Self-Bunded Tank – Holds 6,000 Litres.	BUNDING – AS 1234	Effective Residual (LOW)	Site Manager
1 (b)	Precoat Storage: SPILL	Surface water contamination	Moderate	Unlikely	Low	Bunding Around Tank Max Capacity 10,000 litres	Spill Response	Effective Residual (LOW)	Site Staff
1 (c)	Diesel Storage: FIRE	Toxic smoke impact to neighbours	HIGH	Unlikely	High	Fire Fighting Equipment Installed and Tested	(Fire Extinguishers & Testing)	Effective Residual (MED)	Site Staff
2	Oil Storage: FIRE	Toxic smoke impact to neighbours	High	Likely	High	Extinguishers On site fire extinguishes	Emergency Response Procedures	Effective	Production Co-Ordinator
2	Oil Storage: SPILL	Surface water contamination of Sediment Pond (Onsite)	Moderate	Likely	High	Oil drums on top of bunding	BUNDING – AS 1234	Effective Residual (LOW)	Site Manager

Items of a domestic nature or in domestic packaging has been excluded from this list.

2.5 Safety Equipment

A spill kit is available on site.

INVENTORY OF SAFETY EQUIPMENT

The table below provides an inventory of the safety equipment and other devices available on site to minimize the risks to human health, the environment and to contain/control a pollution incident at Glen Innes Aggregates.

Product	Location	Purpose
Spill Kit	Process Plant, Fuelling area	Control of minor spills
Safety Data Sheets	Administration Offices, workshop	Provide data on chemicals First Aid & clean up processes
Fire Extinguishers	Scattered all through process plant, buildings, and all vehicles	Control of any minor fire
Emergency Shower	Quarry Office (Western End)	For administering first aid
First Aid Kits	Quarry office / All mobile plant	For administering first aid
PPE	Quarry Office / on person	For preventing injuries

To minimise risk of harm to persons at the sites covered by the plan, the site has the following procedures:

- evacuation and muster points
- contractor / visitor inductions
- Safe Work Method Statements / Job Safety Assessments.
- Personal Protective Equipment available to all
- Fire safety equipment
- Telecommunications equipment

Plant and equipment are available to create additional bunding in the event of significant sediment runoff or a fuel spill using material available on site.

2.6 Contact Details

Title	Name	Contact Number
Director of Infrastructure Services	Keith Appleby	See Annexure "A"
Quarry Manager	Mark Gallagher	See Annexure "A"
Production Co-ordinator	Glenn Lee	See Annexure "A"
Council Incident Line	Varies	See Annexure "A"

2.6.2 Notification of External Parties

The following table outlines the contact details and correct sequence for notification in the event of a notifiable pollution incident. The Quarry Manager will, after notifying the Director of Infrastructure of the incident carries out the notifications required by the table below.

Reference Number PIRP GI Aggregates	Version Number 14 Date: 6 Jan 2025	Next Review Date: 6 Jan 2026	Responsible Officer: Mark Gallagher Quarry Manager,
--	---------------------------------------	---------------------------------	--

Emergency Services (if dealing with an emergency)	Police Fire Ambulance	000
NSW EPA	Environment Line	13 15 55
NSW Health Tamworth Public Health Unit	Public Health – Tamworth	(02) 6764-8000
SafeWork NSW		13 10 50
Glen Innes Severn Council	Administration Desk	(02) 6730-2300
Fire and Rescue	(To be notified of an incident that is not an emergency)	000
NSW Resources Regulator		(02) 6738-8500 1300 814 609

2.7 **Communicating with Neighbours and Local Community**

In the event of a notifiable incident, neighbouring properties will be phoned to be advised of the situation.

When a blast is planned, the Director of Infrastructure will be advised. The media officer will also be advised so that a notice can be placed in the Council section of the local newspaper advising of an impending blast and approximate date.

On the day of the blast, warning advice will be issued by the local commercial radio stations and on community radio.

When the approximate time of the blast is known, neighbouring properties will be advised by telephone of the approximate time of the blast.

2.8 **Minimising Harm to persons on the Premises**

Refer to the emergency response plan for the site contained in the Mine Safety Management Plan. At all-time minimizing harm to persons shall be a priority.

2.9 **Training, Testing and Review**

There is a very low risk of a pollution incident occurring. Council will review the PIRP after 12 months. Testing of the plan will be carried out at the time of review.

The plan was implemented on 1 September 2012 and then various aspects will be discussed during regular toolbox meetings.

All staff will be trained in the PIRP and records maintained in the Councils data management system.

A copy of this plan will be uploaded to the Council website and kept within the site folder.



Image – Aerial view Glen Innes Aggregates

WATER MANAGEMENT

Figure 1 shows estimated water flow on site during rain events. The light blue lines show where water is likely to flow, and the dark blue shapes suggest where the water is likely to pool.

The model suggests that most water catchments outside of the current pits are likely to report away from the pits.

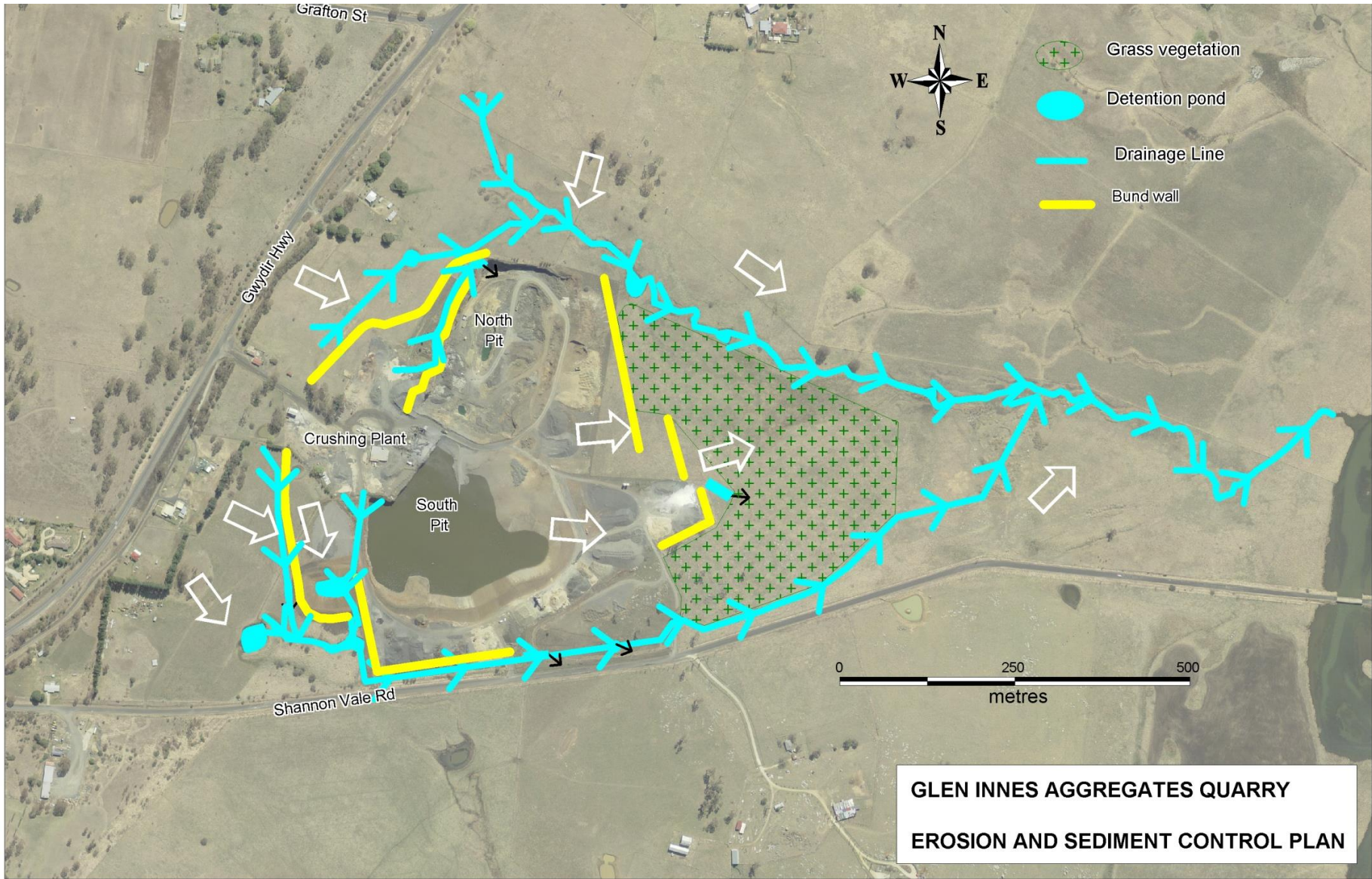
This stormwater runoff model is also available in Propeller on the “Design” tab under “Enviro” labelled as “Env_Water_Catchment_Analysis_200701”.



Figure 1 – Estimated Eater Flow during Rain Events – Glen Innes Aggregates

Reference Number PIRMP GI Aggregates	Version Number 14 Date: 6 Jan 2025	Next Review Date: 6 Jan 2026	Responsible Officer: Mark Gallagher Quarry Manager,
---	---------------------------------------	---------------------------------	--

PIRP – GLEN INNES AGGREGATES



Reference Number PIRP GI Aggregates	Version Number 14 Date: 6 Jan 2025	Next Review Date: 6 Jan 2026	Responsible Officer: Mark Gallagher Quarry Manager,
--	---------------------------------------	---------------------------------	--

The PIRMP will be tested annually and will include.

- A desktop review of the plan to ensure that the information is accurate and up to date.
- A drill exercise to simulate one of the potential incidents.

As it is a requirement of the legislation, this plan will also be tested within one month of any pollution incident occurring on site.

Register for Testing the PIRMP

Date of Test	Issue/People Involved	Comments/Outcomes
04.10.2023	Sandbagged sediment control overflow as pond was rising from significant rainfall event (GIA Staff)	Exercise only – to establish effective increase in capacity of pond to contain pollution on site
06.12.2024	Respond to small oil spill less than 200 lt. (GIA staff & Contractors)	Exercise only – to establish effective and quick response to small spills.

ANNEXURE A

3 Contact Details

Title	Name	Contact Number
Director of Infrastructure Services	Keith Appleby	02 6730 2407 0408 144 251
Quarry Manager	Mark Gallagher	02 6732 1484 0418 612 494
Production Co-ordinator	Glenn Lee	02 6732 1484 0400 174 340
Council Incident Line	Varies	02 6730 2300

-----END-----